

The Next Generation of Panel Meters

Easy to Use. Easy to Read.



Advanced Panel Meter (APM) - Ammeter, Volt Meter, Process Meter

Programmable dynamic backlight colour

Warning flash

40 segment curved bar graph display

Models:
Voltage
Frequency
Current

Combined digital and bar graph display

Programmable scale

Programmatic 4 digit star-burst display

Custom messages & annunciators

2 alarm set points

WIDE viewing angle

USB 2.0
USB port for custom user settings

16 Position switch for selecting standard configurations

Full 4 digit readout for accuracy

PLC

2 outputs - digital and analogue

Less than 53mm deep

The innovative Advanced Panel Meter

The most visible, easy to use, multi-format, programmable panel meter on the market. The APM provides accurate measurement with an immediate visual indication of critical parameters. It has been designed for engineers who require a more effective way of monitoring and displaying data. The unique display combines traditional moving coil meters with the latest digital panel meters. Trumeter - Revolutionising the future of panel meters!

Key Features

Large multi-format display that incorporates:

- 40 segment bar graph display
- Large 4 digit display
- Separate Starburst display area for annunciators, custom messages and alarm information
- Dynamic backlight colour

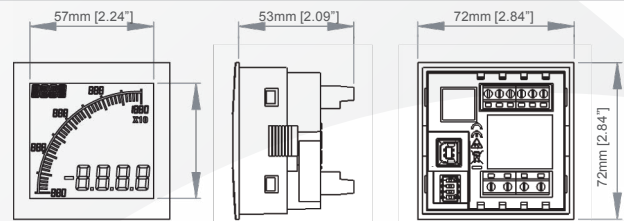
Programmable:

- Scale (offset and gain) and Range (min and max)
- Custom annunciators
- User selectable backlight color and intensity
- Two independent alarm set-points
- Two independent outputs (output models only)
- 4-20mA analogue monitor output (output models only)

Visibility:

- User adjustable backlight brightness and colour
- Large display
- Wide viewing angle (both horizontal and vertical)
- Custom annunciators

Dimensions:

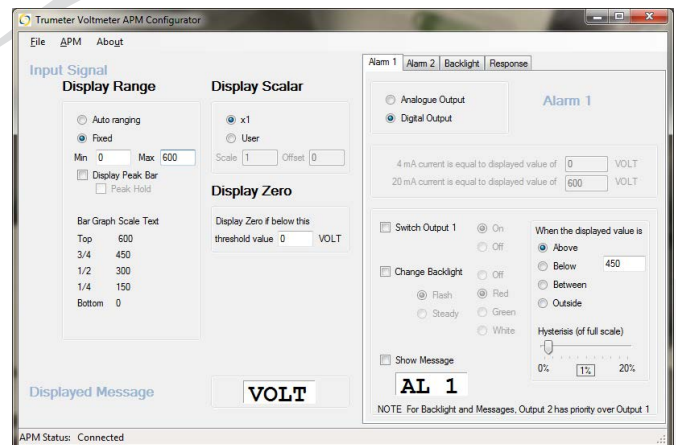


Panel cutout: 68mm x 68mm [2.68" x 2.68"] as per DIN43700/IEC61554

MEASUREMENT	VOLT	AMP	FREQUENCY
Input range (DC)	0 - 600V	0 - 5A	-
Max Using Shunt		1000A	
Input range (AC)	0 - 600V	0 - 5A	2 - 400Hz
Max Using CT		1000A	
Accuracy	1%	1%	0.1%
Display modes		Peak or RMS	
ENVIRONMENTAL			
Temperature - operating		-10 to +60°C	
Temperature - storage		-40 to +70°C	
IP rating (from the front)		IP65	
POWER SUPPLY			
Nominal Input (AC or DC)		12-24 VAC/VDC	
DISPLAY			
Number of digits		4	
Digit height		12mm [0.47"]	
Digit height of annunciator		6mm [0.23"]	
Number of message characters		4	
Backlight colours		Red, Green, White	
LCD display		Positive or Negative	
OUTPUT MODELS			
Max voltage		34V	
Max current		500mA	
Analogue output		4-20mA	
CERTIFICATION			
		UL and cUL, CE	

Easy To Use Software

Just plug into any USB port on your PC, run the freely available APM Configurator application and you're off. No drivers required.



Part Numbers: (POS LCD = Positive LCD; NEG LCD = Negative LCD)

Volt	Description	Amp	Description	Frequency	Description
APM-VOLT-APN	APM VOLT METER, POS LCD	APM-AMP-APN	APM AMMETER, POS LCD	APM-FREQ-APN	APM FREQ METER, POS LCD
APM-VOLT-APO	APM VOLT METER, POS LCD WITH OUTPUTS	APM-AMP-APO	APM AMMETER, POS LCD WITH OUTPUTS	APM-FREQ-APO	APM FREQ METER, POS LCD WITH OUTPUTS
APM-VOLT-ANN	APM VOLT METER, NEG LCD	APM-AMP-ANN	APM AMMETER, NEG LCD	APM-FREQ-ANN	APM FREQ METER, NEG LCD
APM-VOLT-ANO	APM VOLT METER, NEG LCD WITH OUTPUTS	APM-AMP-ANO	APM AMMETER, NEG LCD WITH OUTPUTS	APM-FREQ-ANO	APM FREQ METER, NEG LCD WITH OUTPUTS
022128-01	USB Cable				

Full specifications available online www.truAPM.com

